

STAINLESS STEEL

Solutions



HINGES • TOP BRACKETS • BOTTOM BRACKETS
• ROLLERS • TRACK • BEARING PLATES
SPRINGS • SHAFT • DRUMS
CABLE • PUSHER SPRINGS • CHAIN • ANGLE IRON



Longer Life • Lower Maintenance • Low Noise • Higher Load Rating

Original MAGNUM



Bearing: Double-sealed Precision Bearing
Ball Bearings: High Carbon Chrome Steel
Raceways: High Carbon Chrome Steel
Tire: High Density Polyethylene
Tire Face: Shielded Inner Face
Stem: High Grade Stainless Steel
Collar: High Quality Stainless Steel

MAGNUM SP

Bearing: Double-sealed Precision Bearing
Ball Bearings: Stainless Steel
Raceways: Stainless Steel
Tire: High Density Polyethylene
Tire Face: Shielded Inner Face
Stem: High Grade Stainless Steel
Collar: High Quality Stainless Steel

MAGNUM

Bearingless

Garage Door Rollers

Constructed of the finest materials available in the industry today, our bearingless rollers are ideal for wet and corrosive applications where durability and reliability are crucial.

Ideal for light weight doors in any situation. An excellent product to compliment any polycarbonate door package.

Magnum™ Rollers

The patented design of the original Magnum roller has been an industry favorite for decades in high cycle, dirty, quiet and wet areas. For those extra tough areas, choose the Magnum SP when your door environment demands more.

Part #	Description
RMS3147	3" Magnum Rollers Short Stem - 4-1/2"
RMS3197	3" Magnum Rollers Short Stem - 7-1/2"
RMS2147	2" Magnum Rollers Short Stem - 4-1/2"
RMS2197	2" Magnum Rollers Short Stem - 7-1/2"

Magnum™ Supreme Rollers

For those extra tough areas, choose the Magnum SP when your door environment demands more.

Part #	Description
RMSP3147	3" Supreme Rollers (Short Stem- 4-1/2")
RMSP3197	3" Supreme Rollers (Long Stem- 7-1/2")
RMSP2147	2" Rollers (Short Stem- 4-1/2")
RMSP2197	2" Rollers (Long Stem- 7-1/2")



Roller Kits are available at a discounted price



Bearingless Rollers- Light Duty

Part #	Description
RMSBL3147	3" Bearingless Rollers (Short Stem- 4-1/2")
RMSBL3197	3" Bearingless Rollers (Short Stem- 7-1/2")

STAINLESS STEEL

Cleaner Appearance • Improves Door Reliability

Torsion Springs For Corrosive Areas

Stainless Steel

Totally rust-free 302 series stainless steel wire.

Part #	Description
SSTOR	Stainless Steel Torsion Springs



- Rust-Proof/Corrosion Resistant
- Maintains Torque Over Time
- Variety - Many Sizes and I.D's
- High Quality, Clean Appearance
- Longer Lasting
- Improves Door Reliability

Measure Twice!!!
All springs are non-returnable

When ordering furnish the following information:

- 1. Winding:** Right Hand Wound or Left Hand Wound?
(See "winding" chart)
- 2. Wire Size:** Measure 10 or 20 coils to nearest 1/16" and refer to "Spring Wire Chart"
(Example: 10 coils = 2 5/8" or 20 Coils= 5-1/4" for .262 Wire)
- 3. Inside Diameter:** Measure the inside of spring to nearest 1/16". (refer to "I.D. Chart")
I.D's not listed on chart probably use 1-3/4", 2-5/8", 3-3/4", 5-1/4", or 6" I.D.'s. These are usually indentifiable by numbers found on the spring fittings, such as ".175" for 1-3/4" I.D., ".200" for 2" I.D., etc.
- 4. Length:** Measure overall length of spring, or provide total number of coils in unwound length of spring.

OR

- 1. Door Size W x L**
- 2. Door Manufacturer**
- 3. Door Weight**
- 4. Drum #**
- 5. Track Configuration**

SPRING WIRE

Common Diameters	Common Wire Sizes		Galvanized
1-3/4"	.207	.295	.216
2"	.2187	.3065	.226
2-1/4"	.225	.3125	.236
2-5/8"	.234	.331	.246
3"	.2437	.3437	.255
3-3/8"	.250	.3625	.267
3-3/4"	.2625	.375	.275
5-1/4"	.283	.4062	.287
5-7/8"			.299
6"			.315
			.330
			.346
			.362
			.367
			.392

WARNING:

Torsion springs are under extreme pressure and should only be handled by experienced personnel who have been trained in the proper procedures, tools and safety measures. Improper use could result in serious injury or death.

Winding Chart

Left Hand Wind



Right Hand Wind



Please call for availability of other wire sizes. Duplex and Triplex Springs also available.

Type 304 (S30400) or "18/8" (18% chromium 8% nickel), is the most commonly used grade or composition

The chromium content in stainless steel alloys is what generally prevents corrosion. Pure iron, the primary element of stainless steel, is extracted from its natural state as iron ore, it is unstable by itself, and naturally wants to corrode (rust). The chromium helps to procrastinate nature's attempts to combine the pure iron with oxygen and water to form rust.

The chromium works by reacting with oxygen to form a tough, adherent, invisible, passive layer of chromium oxide film on the steel surface. If damaged mechanically or chemically, this film is self healing as long as it has enough oxygen

STAINLESS STEEL

Rust-Free In Any Application • Wear and Crack Resistant

Stainless Steel Track

Enhance the life of your door system with stainless steel track.

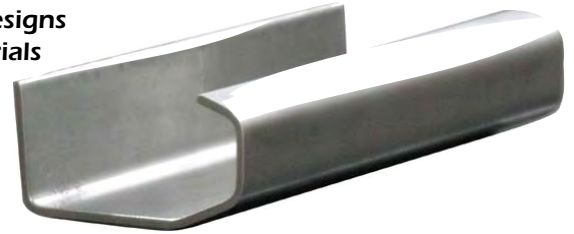
Resists Chemical/Moisture Corrosion
Abrasion Resistant
Thermally Stable • FDA Approved Material

2 Inch
Stainless Steel Track
Now Available!



Features

Rust-Free, 304L Stainless Steel Construction
Completely Roll-formed- No Weldments
Universal - Fits Most Sectional Doors
Proven Quality Designs
Heavy Duty Materials
Easy Installation



3 Inch Stainless Steel Track - 12 ga.

3" SS Full Angle Mounted Track Set

	Standard Lift	HighLift- Ext. Vertical	High Lift- w High Lift leg	Vertical
8'	TAS308-SL	TAS308-EV	TAS308-HL	TAS308-VL
10	TAS310-SL	TAS310-EV	TAS310-HL	TAS310-VL
12'	TAS312-SL	TAS312-EV	TAS312-HL	TAS312-VL
14'	TAS314-SL	TAS314-EV	TAS314-HL	TAS314-VL
16'	TAS316-SL	TAS316-EV	TAS316-HL	TAS316-VL

3

2 Inch Stainless Steel Track - 14 ga.

2" SS Bracket Mounted Track Set

	Standard Lift	HighLift- Ext. Vertical	High Lift- w High Lift leg	Vertical
8'	TASB208-SL	TASB208-EV	TASB208-HL	TASB208-VL
10	TASB210-SL	TASB210-EV	TASB210-HL	TASB210-VL
12'	TASB212-SL	TASB212-EV	TASB212-HL	TASB212-VL
14'	TASB214-SL	TASB214-EV	TASB214-HL	TASB214-VL
16'	TASB216-SL	TASB216-EV	TASB216-HL	TASB216-VL

2

2" SS Clip Angle Mounted Track Set

	Standard Lift	HighLift- Ext. Vertical	High Lift- w High Lift leg	Vertical
8'	TASC208-SL	TASC208-EV	TASC208-HL	TASC208-VL
10	TASC210-SL	TASC210-EV	TASC210-HL	TASC210-VL
12'	TASC212-SL	TASC212-EV	TASC212-HL	TASC212-VL
14'	TASC214-SL	TASC214-EV	TASC214-HL	TASC214-VL
16'	TASC216-SL	TASC216-EV	TASC216-HL	TASC216-VL

2

2 Inch Stainless Steel Track Now Available!
Ideal For Residential Carriage House Doors-

STAINLESS STEEL

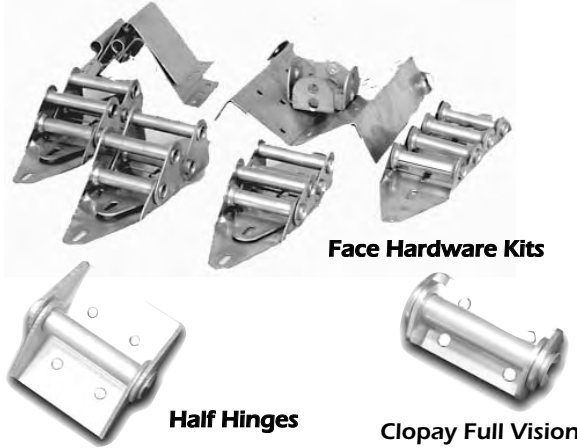
Longer Service Life • Better Wearability

Hinges & Face Hardware



Stainless Steel Hinge

	#1	#2	#3	#4	#5	#6	#7	#8	#9	#10	#11	#12
12 Ga.	HS112	HS212	HS312	HS412	HS512	HS612	HS712	HS812	HS912	HS1012	HS1112	HS1212
14 Ga.	HS114	HS214	HS314	HS414	HS514	HS614	HS714	HS814	HS914	-	-	-



Face Hardware Kits

Half Hinges

Clopay Full Vision

Part # Description

HSO112	Cut Down Hinge, SS, OHD Style
HSCFV112	Full Vision Hinge, SS, Clopay Style
HSCC112	Combo Hinge, SS, Clopay Style
HTUS	Univ Stainless Steel Top Fixture
HTUSH	Univ SS Top Fixture, Tall
HTLS	Low Headroom S.S Top Fixture
HBS2U	Stainless Steel Bottom Brackets 2" Door, 2" or 3" Track - Single End Stile
HBS3U	Stainless Steel Bottom Brackets 3" Door, 2" or 3" Track - Single End Stile
HBS2UD	Stainless Steel Bottom Brackets Heavy Duty 11 ga, 2" Door, 2" or 3" Track, - Double End Stile
HBS3UD	Stainless Steel Bottom Brackets Heavy Duty 11 ga, 3" Door, 2" or 3" Track, - Double End Stile
HBS23LU	Stainless Steel LHR Bttm Brackets Heavy Duty 11 ga, 2" Door, 2" or 3" Track

Coated Replacement Parts

Enhance the life of your door system with our coated drums, couplers and winding cones. The coating on these replacement parts allow your doors to reduce maintenance and perform better in tough wet and/or corrosive areas.

Resists Chemical/Moisture Corrosion • Abrasion Resistant

Thermally Stable • FDA Approved

Coupler



Cable Drum



Winding Cones

Couplers

Part # Description

CP100N	1" Plated Coupler
--------	-------------------

Cable Drums

Part #	Description	Max. Door Ht
400-12SN	Standard Lift Light Commercial, Keyed	12'3"
5250-18SN	Standard Lift Medium Commercial, Keyed	18'2"
400-54SN	High Lift Light Commercial, Keyed	11'1" (54" Highlift)
5250-54SN	High Lift Medium Commercial, Keyed	12'0" (54" Highlift)
5750-120SN	High Lift Medium Commercial, Keyed	15'0" (120" Highlift)
6375-164SN	High Lift Heavy Commercial, Keyed	19'0" (164" Highlift)
850-11SN	Vertical Lift Medium Commercial, Keyed	11'1"
1100-18SN	Vertical Lift Medium Commercial, Keyed	18'1"

Winding Cones

Part # Description

C200RN	2" ID Winding Cone RHW
C200LN	2" ID Winding Cone LHW
C258RN	2-5/8" ID Winding Cone RHW
C258LN	2-5/8" ID Winding Cone LHW
C334RN	3-3/4" ID Winding Cone RHW
C334LN	3-3/4" ID Winding Cone LHW
C600RN	6" ID Winding Cone RHW
C600LN	6" ID Winding Cone LHW

STAINLESS STEEL

Rust-Free In Any Application • Wear and Crack Resistant



Highlift Plate



Vertical Lift Plate



Stainless Steel Bearing Plates



Sprocket



Stainless Steel Bearings



Solid Shaft

Highlift/Vertical Headplates

Part #	Description
--------	-------------

Stainless Steel - No Bearing

HLHS345-2	Highlift Headplate, 2" Track
HLHS345-3	Highlift Headplate, 3" Track
VLHPSS	Full Vertical Lift Headplate, 3" Track

Stainless Steel - with PBSS-AL Bearing

HLHBS345-2	High Lift Head Plates, 2" Track
HLHBS345-3	High Lift Head Plates, 3" Track
VLHPSB	Full Vertical Lift Headplate, 3" Track

Bearing Plates

Part #	Description
--------	-------------

Stainless Steel - No Bearing

BCS338	3-3/8" Stainless Steel Center Plate
BCS438	4-3/8" Stainless Steel Center Plate
BCS438W	4-3/8" Stainless Steel Center Plate for 6" springs.
BCS500	5" Stainless Steel Center Plate
BCS600	6" Stainless Steel Center Plate
BCS600-6	6" Stainless Steel Center Plate for 6" springs
BCUS	Stainless Steel Universal Center
BFS345	Adjustable SS End Plate (3-3/8" & 4-3/8")
BFS56	Adjustable SS End Plate (5" & 6").

Stainless Steel - with PBSS-AL Bearing

PBSS338C	3-3/8" SS Center Plate w/SS Bearing
PBSS438C	4-3/8" SS Center Plate w/SS Bearing
PBSS438CW	4-3/8" SS Center Plate, w/SS Bearing for 6" springs
PBSS500C	5" SS Center Plate w/SS Bearing
PBSSBCUS	Universal SS Center Plate w/SS Bearing
PBSS34F	Adjustable End Plate w/SS Brg. (3-3/8" & 4-3/8")
PBSS56F	Adjustable End Plate w/SS Brg. (5" & 6")

Sprocket

Part #	Description
--------	-------------

41B11SS	Stainless Steel 11 Tooth Sprocket
41B12SS	Stainless Steel 12 Tooth Sprocket

Greaseable Bearings

Part #	Description
--------	-------------

PBSS-AL	1" Stainless Steel Greaseable Bearing Includes Anodized Aluminum Housing
PBSS-SS	1" Stainless Steel Greaseable Bearing Includes Stainless Steel Housing

Torsion Shafts

Part #	Description
--------	-------------

SSK100S6	6' Stainless Steel, 1" Solid, Keyed
SSK100S12	12' Stainless Steel, 1" Solid, Keyed
SSK100G6	6' Galvanized Steel, 1" Solid, Keyed
SSK100G12	12' Galvanized Steel, 1" Solid, Keyed
SSK-3	3" x 1/4" Stainless Steel Keystock

STAINLESS STEEL

Longer Service Life • Better Wearability



Track Bolts/Nuts/Lags

Part #	Description
TBLT1458SS	Track Bolt, 1/4" x 5/8", Stainless Steel
NUTFS14	Flange Nut, 1/4", Stainless Steel
LAG516158P	Wood Lag, 5/16" x 1-5/8", Plated
LAGS516138	Wood Lag, 5/16" x 1-3/8", Stainless Steel
LAG5163P	Wood Lag, 5/16" x 3", Plated
WASHS38	Washer, 3/8", Stainless Steel

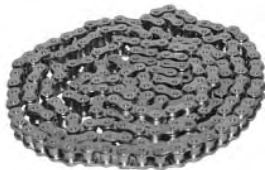
Stainless Steel Hinge Screws

Part #	Description
TAOS141W	Hinge Tek Screws 1/4" x 1" self-driller w/bonded washer
TAOS141	Hinge Tek Screws 1/4" x 1" self-driller
TAPS1458W	Hinge Screws 1/4" x 5/8" self-threader w/ bonded washers
TAPS1458	Hinge Screws 1/4" x 5/8"



Bolts/Washers/Nuts

Part #	Description
CBLTS381	Carriage Bolt, 3/8" x 1" - Stainless Steel
NUTFS38	Flange Nut, 3/8" - Stainless Steel
NUTS38	Hex Nut, 3/8" - Stainless Steel
HBLTS381	Hex Head Bolt, 3/8" x 1" - Stainless Steel
HBLTS3815	Hex Head Bolt, 3/8" x 1-1/2" - Stainless Steel
HBLTS3825	Hex Head Bolt, 3/8" x 2-1/2" - Stainless Steel
WASHS38	3/8" Washer - Stainless Steel



Stainless Steel Chain

Stainless Steel Chain (300 Series)

Part #	Description
CSS41	#41 Stainless Steel Chain
CSS50	#50 Stainless Steel Chain
CMLSS41	#41 Stainless Steel Master Link
CMLSS50	#50 Stainless Steel Master Link



Stainless Steel Cable

Cable

Part #	Description
CBS18	1/8", 7 X 19 Stainless Steel Cable
CBS532	5/32", 7 x 19 Stainless Steel Cable
CBS316	3/16", 7 X 19 Stainless Steel Cable
CBS14	1/4", 7 X 19 Stainless Steel Cable
CBS18NR	1/8", 19 x 7 Non-Rotating Stainless Steel Cable

We can assemble Cables with Thimbles and Sleeves -



Pusher Springs

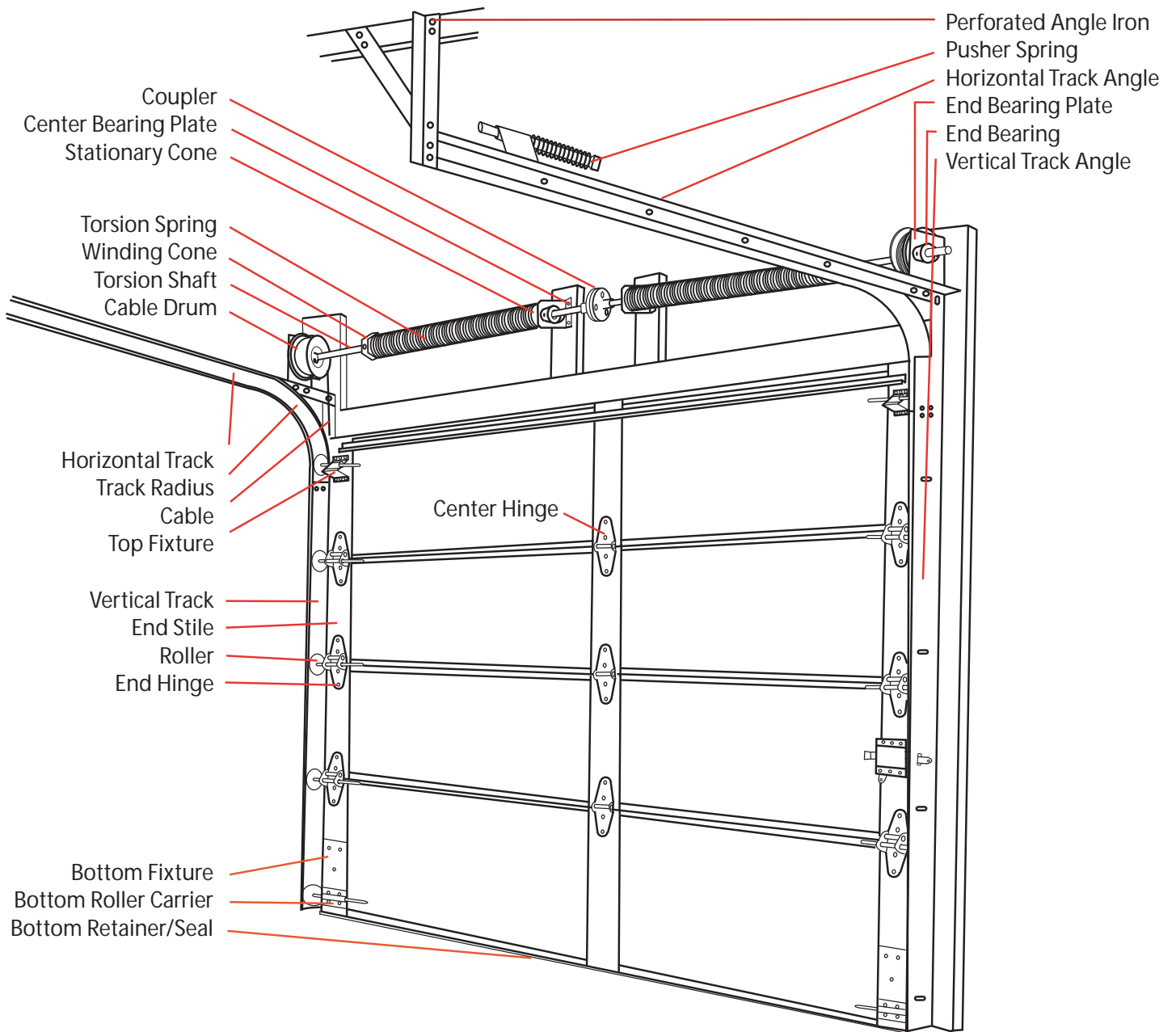
Pusher Springs

Part #	Description
SPS15	15" Pusher Springs, Stainless Steel

STAINLESS STEEL

Cleaner Appearance • Improves Door Reliability

The majority of the listed parts are available in stainless steel, commercial plating or powdercoat paint for maximum corrosion resistance.



Stainless Steel is a common name for metal alloys that consist of 10.5% or more Chromium (Cr) and more than 50% Iron (Fe). Although it is called "stainless", a better term for it is "highly stain resistant".
A somewhat dark metal, it looks bright because it reflects light.

STAINLESS STEEL

Cleaner Appearance • Improves Door Reliability